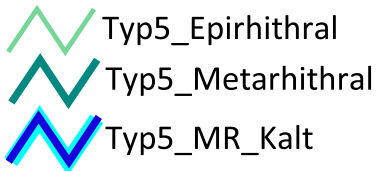


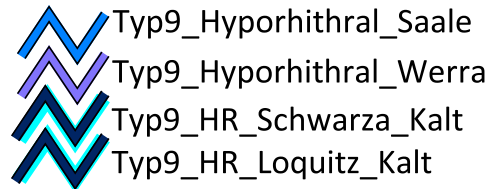
LEGENDE

Fischgewässertypen 2018

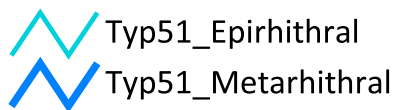
Typ 5 - grobm., silik. MG-Bach



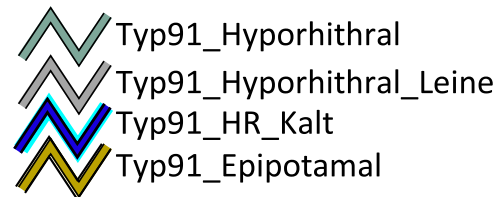
Typ 9 - silik., fein-grobm. MG-Fluss



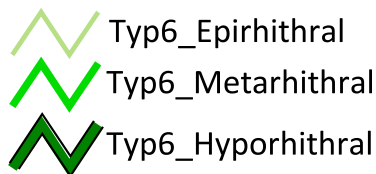
Typ 5.1 - feinm., silik. MG-Bach



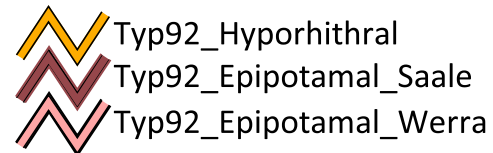
Typ 9.1- karb., fein- grobm. MG-Fluss



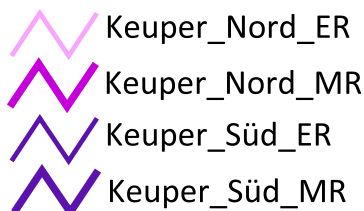
Typ 6 - feinm., karb. MG-Bach



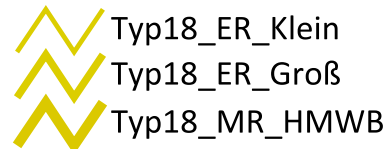
Typ 9.2 - gr.Fluss des MG



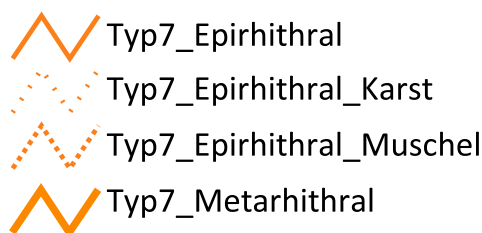
Typ 6_K Keupertypen



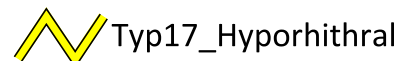
Typ 18 - Löss-Lehm TL-Bach



Typ 7 - grobm., karb. MG-Bach



Typ 17 - kies. TL-Fluss



OWK - eigene Typen



OWK Kategorie

